

»» NEWSLETTER ««

NASA Equity & Environmental Justice

EEJ NEWS

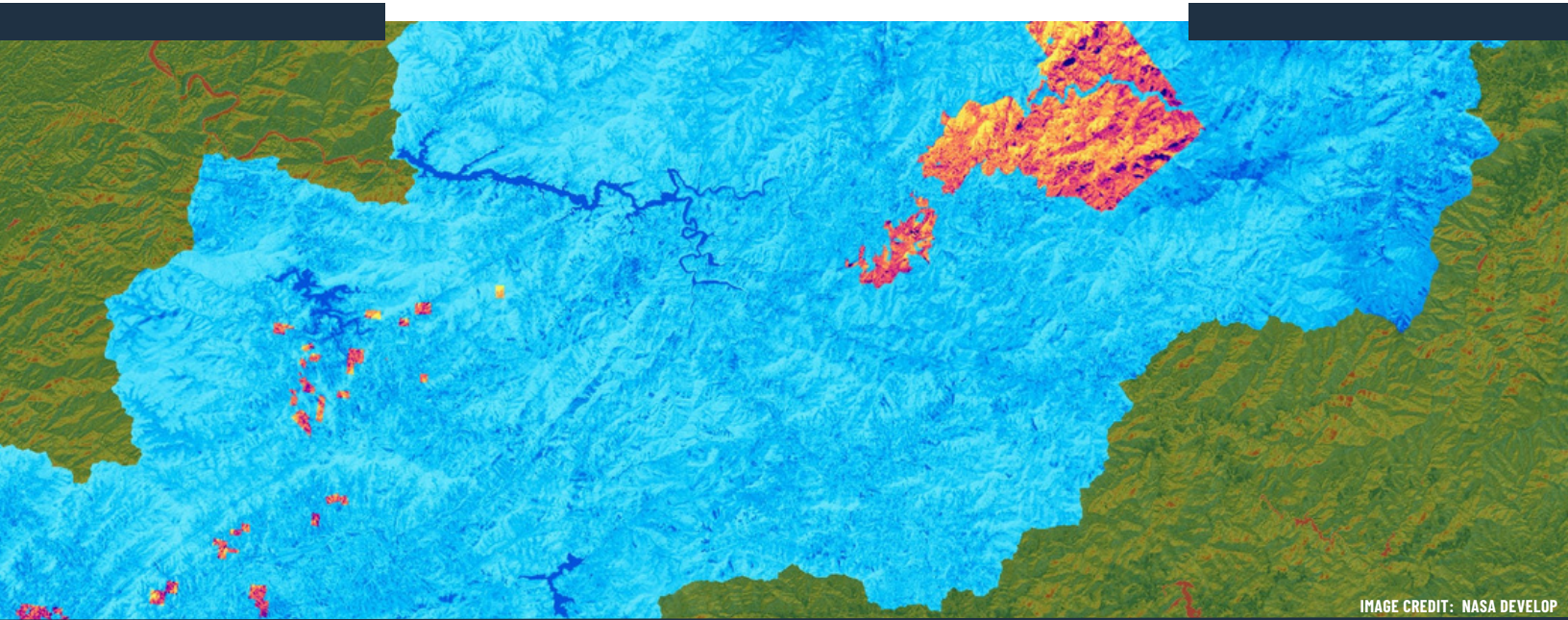


IMAGE CREDIT: NASA DEVELOP

»» ANNOUNCEMENTS ««

NASA'S SPACE TECH PRIZE BOLSTERS DIVERSITY & INCLUSIVITY CHAMPIONS

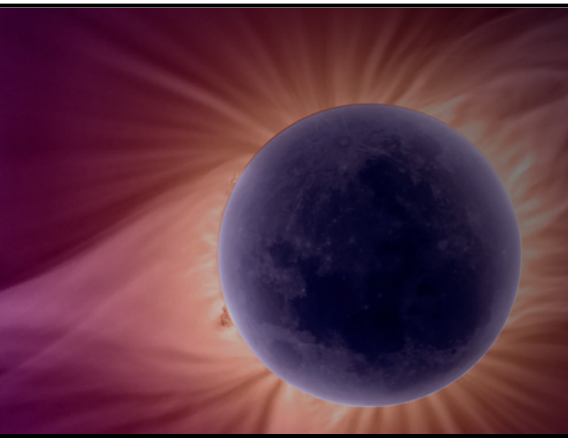
As of March 2024, NASA selected the first winners of the agency's Space Tech Catalyst prize to expand engagement with underrepresented and diverse individuals in the space technology center. As part of the agency's broader commitment to inclusivity and collaboration, each of the winners received \$25,000 to create more inclusive space technology ecosystems. Winning individuals have demonstrated the best collaboration practices with diverse researchers, technologists and entrepreneurs. These champions also bring effective strategies that contribute to NASA's ongoing efforts to develop a representative space technology landscape, while enhancing its ability to find creative solutions to technical challenges. See a list of the winners and more information about the Space Tech Prize [HERE](#).



NASA ECLIPSE CITIZEN SCIENCE

On April 8, 2024, a total solar eclipse crossed North America, passing over Mexico, the United States, and Canada - the last total solar eclipse visible from the contiguous United States until 2044. A total solar eclipse happens when the Moon passes between the Sun and Earth, completely blocking the face of the Sun.

On top of this rare eclipse event, April is also citizen science month! To celebrate, participants both in and outside the eclipse path joined NASA to learn more about our Sun and Earth and the effects of a total solar eclipse. Participants helped study structures and changes in the Sun's outer atmosphere, contributed to our understanding of radio emissions caused by solar activity, and helped research the impact of the eclipse on wildlife. Learn more about these citizen science projects [HERE](#).





UPCOMING CONFERENCES



U.S. INDIGENOUS DATA SOVEREIGNTY & GOVERNANCE SUMMIT 2024

Dates: April 11-12, 2024. Tucson, AZ

This summit plans to convene Indigenous leaders, community programs, academics, policy experts, and other data actors and rights holders from across the nation to develop guidance around appropriate data governance structures that support Indigenous People's own IDsov initiatives. During sessions at the conference, scholars also plan to identify actions to advance Indigenous data governance in the U.S. This event is open for virtual attendance. Learn more [HERE](#).



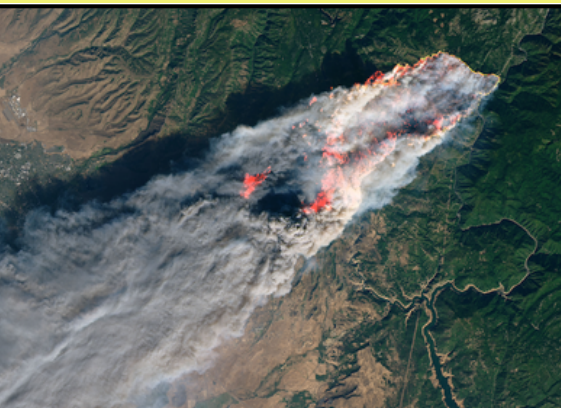
AMERICAN PUBLIC HEALTH ASSOCIATION ANNUAL MEETING

Dates: October 27-30, 2024. Minneapolis, MN

This annual APHA meeting is where public health professionals convene, learn, network, and engage with peers. The meeting serves to strengthen the profession of public health, share the latest research and information, promote best practices and advocate for public health issues and policies grounded in research. This year's meeting theme is rebuilding trust in public health and science. Submit abstracts by March 29 [HERE](#) and learn more [HERE](#).



PROJECT HIGHLIGHTS



Assessment of Wildland Fire-Related Environmental Exposure Issues Impacting Vulnerable Populations in California

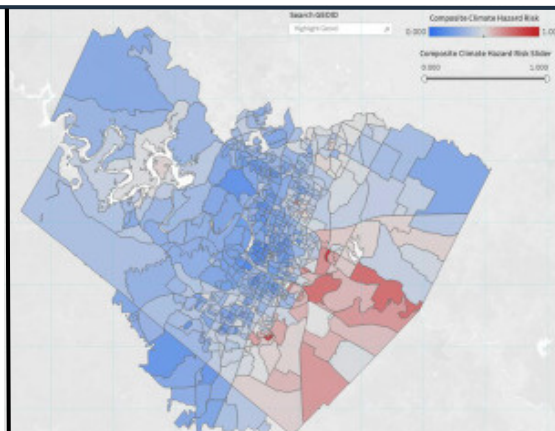
Team: Joseph Wilkins, Miriam Marlier, Claire Schollaert, Diane Garcia-Gonzales, Michael Jerret, Claire Schollaert, Jilhoon Jung, Byron Ifediora

Wildland fires smoke impacts continue to increase air pollution in the United States (US) as fires grow more frequent and intense. Communities located in the wildland-urban interface (WUI) may be vulnerable to smoke exposures due to their proximity to fire sources, but there is limited research on health outcomes in these specific communities. To inform the Applied Sciences Program's longer-term EEJ efforts and EEJ-oriented application activities, this project is integrating Earth science information of smoke pollution with socioeconomic data to assess community vulnerability in the WUI. A user-friendly community health and vulnerability index (CHVI) will be produced for the WUI in California for sustained EEJ purposes and decision-making activities. Learn more [HERE](#).

ATX CA3TCH UP: Climate Atlas for Accountability and Advocacy Strategies through Co-production with Historically Underserved Community Partners in Austin, TX

Team: Patrick Bixler, Dev Niyogi, Carmen Llanes Pulido, Marc Coudert, Sergio Castellanos, Matt Bartos, Paola Passalacqua, Jacqueline Moss, Harsh Kamath, Jessica Jones, Nina Collard, Elizabeth Dyer

The City of Austin, TX (ATX) wants to strategically address equity and environmental justice (EEJ) through climate resiliency and infrastructure investment options. This strategic path has challenges. One important being, prioritizing the neighborhoods where investments are made relative to the hotspots of environmental stresses they experience. Our project partner, Go Austin/Vamos Austin (GAVA), has compiled information and experiences that show the disproportionate environmental extremes the historically underserved neighborhoods face and the additional costs they incur due to rising housing prices and associated cost of living. This data integration project combines municipal policy analysis, local community experiences and independent geospatial data from academic teams to provide a more effective means for the City to undertake EJ decisions. Learn more [HERE](#).



NASA ROSES SOLICITATIONS



Volunteer to be a panel reviewer for Community Action for Equity and Environmental Justice (ROSES A.47). [HERE!](#)



A.50 CITIZEN SCIENCE FOR EARTH SYSTEMS PROGRAMS

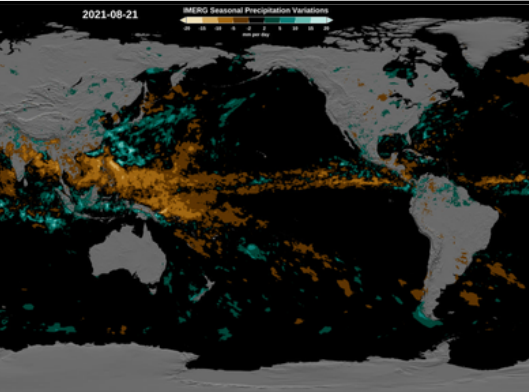
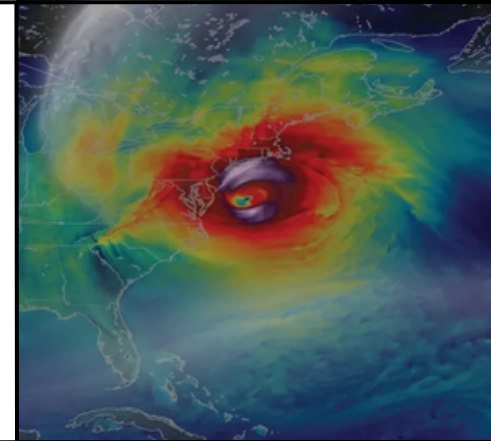
NASA is seeking proposals that develop and implement capabilities to augment and enhance NASA scientific data capacity through voluntary observations, interpretations, or other direct participation by members of the general public to advance understanding of the Earth as a system. This program aims to advance the use of citizen science in research about Earth by directly supporting citizen science activities, as well as deploying technology to further citizen science research. Projects must use citizen science or crowdsourcing platforms to advance our scientific knowledge of the Earth system.

NOIs are due by April 15, 2024 and proposals are due by May 14, 2024. Learn more [HERE](#).

A.42 EARTH ACTION: DISASTER RISK REDUCTION, RECOVERY, AND RESILIENCE

NASA seeks proposals for projects that expand the development and application of tools and capacities in the use of Earth science information for supporting decisions related to disaster risk reduction, recovery, or resilience. Proposals are required to address the linkages between natural or human-made hazards, exposure to these hazards, and the vulnerability of communities to these hazards for improved disaster management. These projects must demonstrate tangible benefits to one or more partners, improved outcomes in the actions of the partner from using Earth observations in their decision-making process, and/or measurable improvements in the lives and livelihoods that their decisions affect.

Proposals are due June 14, 2024. Find a link to the pre-proposal telecon (scheduled for April 11, 2024) and learn more [HERE](#).



A.67 SUPPORTING CLIMATE RESILIENT COMMUNITIES

This call for proposals aims to increase the use of NASA Earth observations to support community resilience, expand the communities of practice who use NASA Earth observations to develop climate-informed community resilience decisions, demonstrate the value of using NASA Earth observations to prepare for and respond to climate change, and inform NASA's future strategic engagement and activities on climate resilience. Proposals must engage communities in advancing climate-informed decisions that enhance their resilience to the impacts of climate change and involve organizations that assist in knowledge sharing between the scientists and decision makers.

Proposals are due by May 3, 2024. Learn more [HERE](#).



INTERN SPOTLIGHT



SPRING INTERN SPOTLIGHT: DIANA GARCIA SILVA

Diana Garcia Silva is a returning Prizes and Challenges (P&C) intern within the Capacity Building Program. She is a soon to be graduating senior at Queens College, a City University of New York institution, where she is pursuing her master in Environmental and Geological Sciences. Her interest in the field started very early on during her elementary school days, but it wasn't until her time as an undergrad that she grew a greater interest in Water management. Her pursuit in STEM has led her to intern at the DEP in NYC, develop engaging statistical lessons as part of her thesis work, and eventually a continuing internship at NASA. Within P&C, she had the opportunity to engage in projects of various topics, allowing her to observe what it takes to conduct a project and collaborate with others. Her main project has led her to reviewing past competitions and interviewing experts within the field to capture insights and best practices to develop a report which can be utilized for future prize competitions. As a new member to EEJ, she is working on a communication material that talks about EEJ involvement with water resources. Her interests also spans into data analysis and visualization to communicate issues in an engaging manner. After graduation she intends to go on vacation and apply to the NASA DEVELOP program to further her interest in utilizing remote sensing data, and explore professional opportunities in the water conservation field.



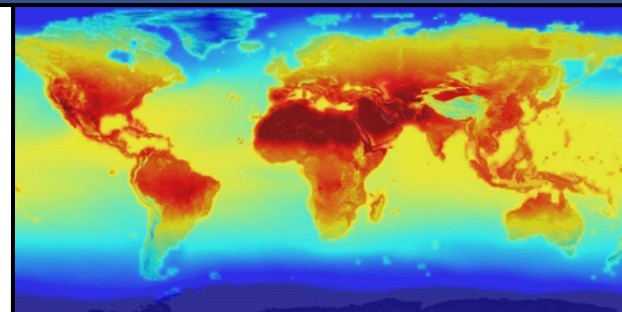
UPCOMING EVENTS



NASA EEJ WEBINAR: CLIMATE RESILIENCE

Date: April 30, 2-3pm EST

This webinar is part of NASA's EEJ monthly webinar series, aiming to strengthen the NASA EEJ community of practice as well as encourage knowledge sharing between PI's, team members, and others doing EEJ work. This specific session will provide EEJ as well as Climate Resilience program updates from Program Manager, Michelle Hawkins. This webinar will also feature talks from Groundwork USA/Groundwork NRG on their Climate Safe Neighborhoods Initiative and talks from our A.49 PIs about the role of climate resilience in their research. The session will close out with a guided discussion and Q&A. Keep an eye out for the registration link coming soon!



NASA EARTH DAY CELEBRATION

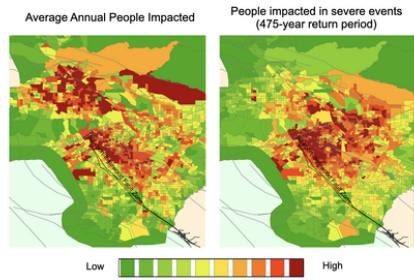
Date: April 18-19, 2024 NASA Headquarters

Join NASA in celebrating Earth Day with this interactive and informational event. On April 18-19 2024, an Earth Day Celebration will take place in the East Lobby of NASA Headquarters. This event will consist of a trip to the Earth Information Center, hands-on activities, an immersive exhibit, and even a take-home kit. This event is free and open to the public, occurring from 9:00AM to 3:00PM daily. To learn more, click [HERE](#).

HAZARDOUS HEAT EXPOSURE AMONG INCARCERATED PEOPLE IN THE UNITED STATES

Cascade Tuholske, Victoria D. Lynch, Raenita Spriggs, Yoonjung Ahn, Colin Raymond, Anne E. Nigra, & Robbie M. Parks

Climate change has increased severely over the past few decades, and is predicted to increase the frequency of potentially hazardous heat-related health conditions. Researchers have evaluated the exposure to hazardous heat for thousands of carceral facilities across the United States. Results showed that the number of hot days per year increased during the 1980's-2020, mostly in the southern U.S. Texas and Florida showed to account for over half of the total exposure, even though these states only hold 12% of all incarcerated people. This article goes in depth about the urgency for enhanced infrastructure, health system intervention and treatment of incarcerated people. Read more [HERE](#).



INEQUALITY PERSISTS AFTER AN EARTHQUAKE'S IMPACT

Rebecca Owen, Charles Huyck, and Yajie Lee

In a recent [study](#) presented at the 2023 fall meeting of the American Geophysical Union, Charles Huyck and Yajie Lee from [ImageCat](#), a catastrophe modeling company, investigated the social vulnerability that traditional catastrophe models aren't capturing. Using Los Angeles County as an example, Huyck, Lee and colleagues examined the financial impacts of a devastating earthquake by contrasting the average dollar loss per household with the number of people affected. By combining modeling tools with residential data, the researchers found an alarming disparity: Marginalized communities would be disproportionately affected in the wake of a large-scale disaster. This article discusses the importance of equitable earthquake mitigation practices. Read more [HERE](#).

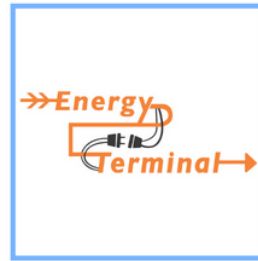
PODCASTS

Uptown Chats

By: Jaron Burke and Lonnie Portis from WeACT

Energy Terminal (Episode 39): Equity and the Energy Transition

By: Michael Wood, Hope Pratt, and Chloe Young
Guest: Lauren Shum



The Equity and Environmental Justice Program (EEJ)

The EEJ program aims to advance progress on equity and environmental justice. One part of this effort is to help build the community of practice around the application of Earth science information to inform action in EJ communities by monitoring and measuring environmental factors. This newsletter is one of the program's strategic communication efforts for engaging those working in the space. It will continue to evolve, so please share your thoughts for what information is useful to you!

Learn more about the EEJ Program and access our previous newsletters by visiting our website [HERE](#).

CONTACT US:

[Contact us](#) with "EEJ newsletter" in the subject line with any comments, questions, or feedback!

Was this forwarded to you?
[Subscribe here!](#)

Unsubscribe at any time by emailing us at the contact link above